

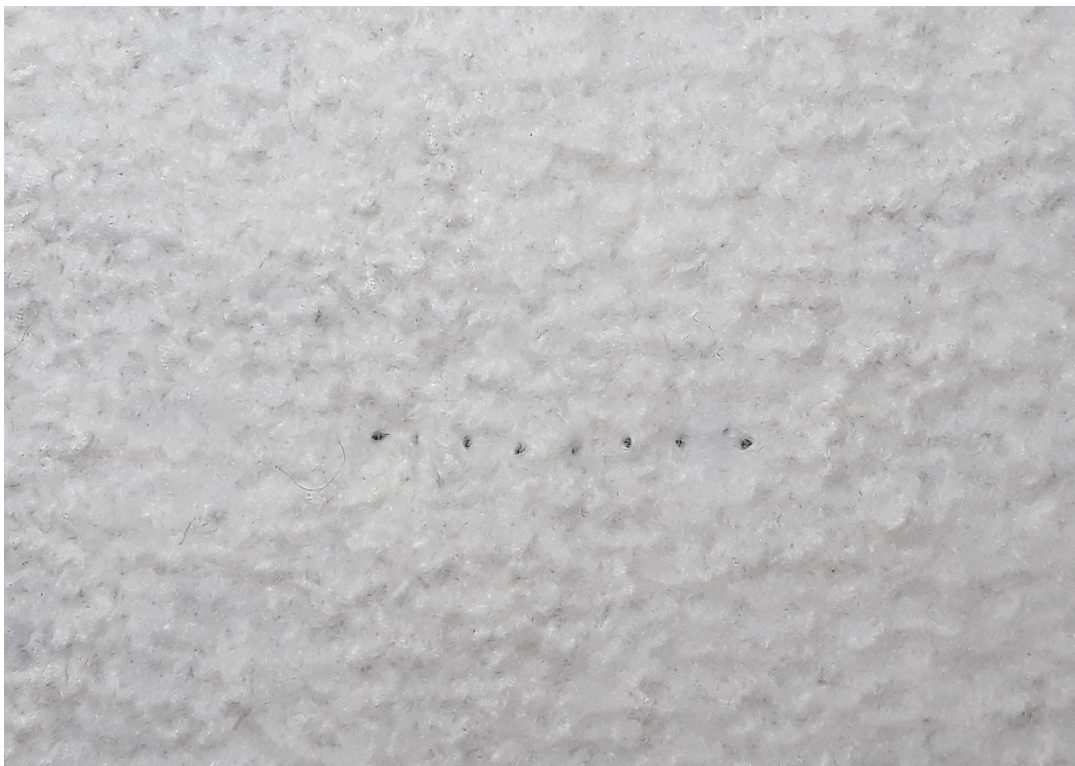
FIXING NEEDLE HOLES

Wool embroidery on nuno-felt should be done with extreme care. We work with thick needle and wool yarn which make wholes into the fabric that can be visible if remove the stitches.

Despite our careful stitching it is inevitable to not make some mistakes.

Although wabi sabi stitchery embraces imperfection, but not poorly done handy-work.

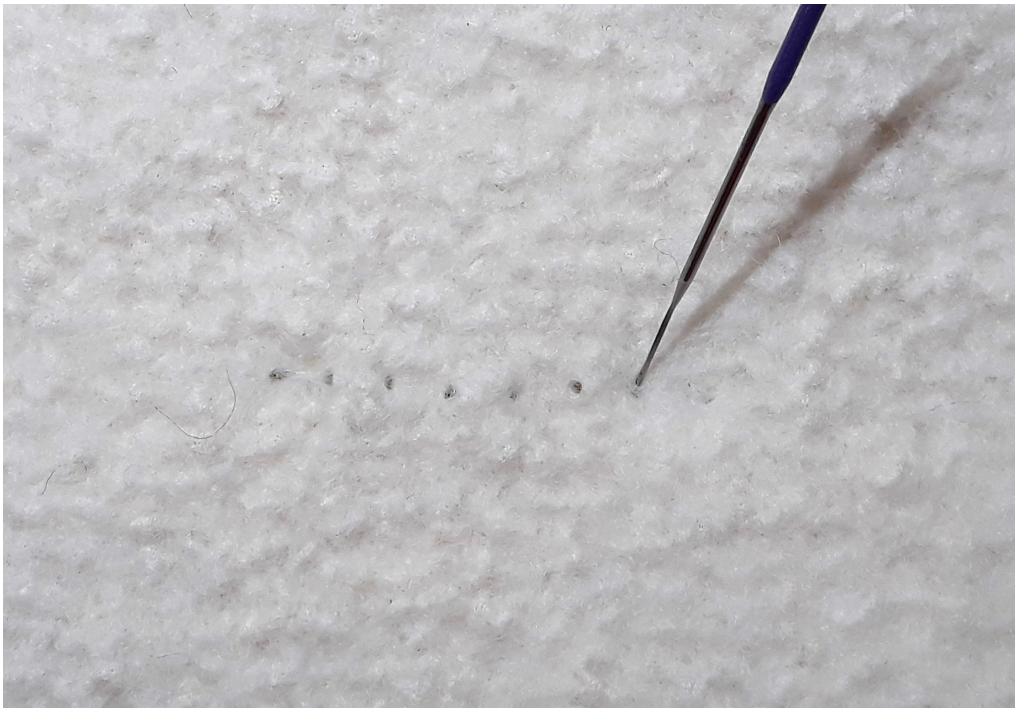
When we absolutely need to remove embroidery stitches to fix a mistake, it has to be done with care and without ruining the fabric, proceed slowly.



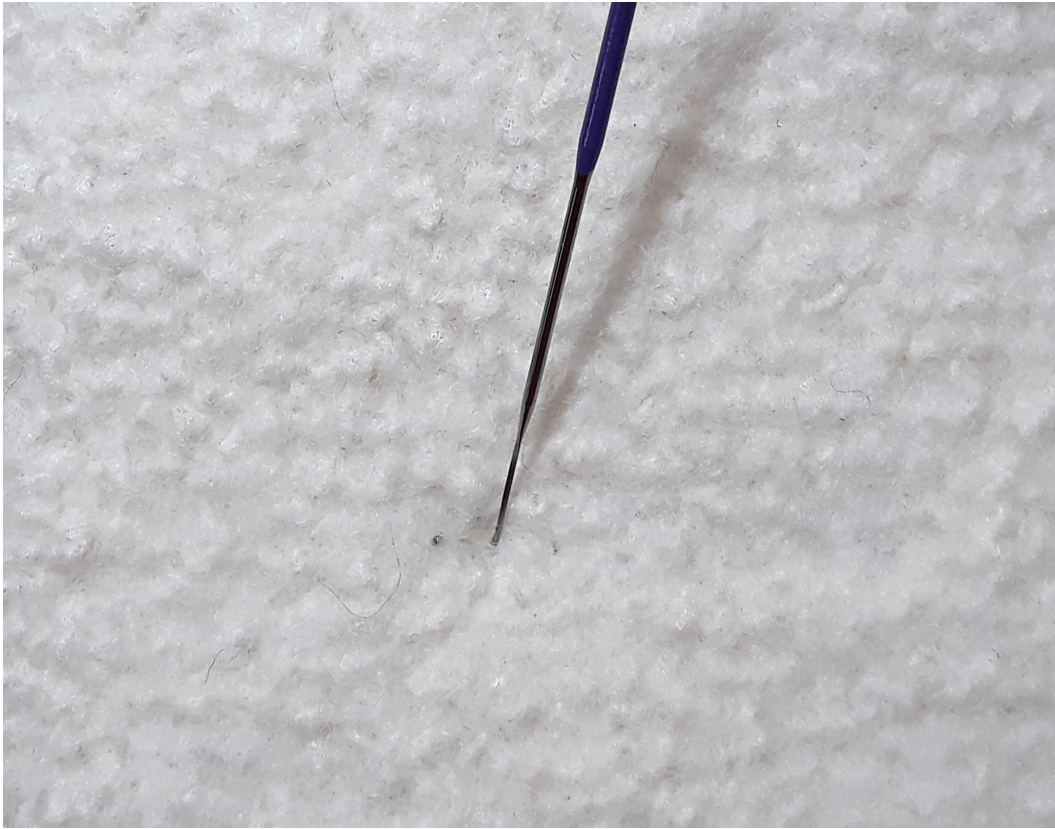
Needle wholes after removing the wool yarn.



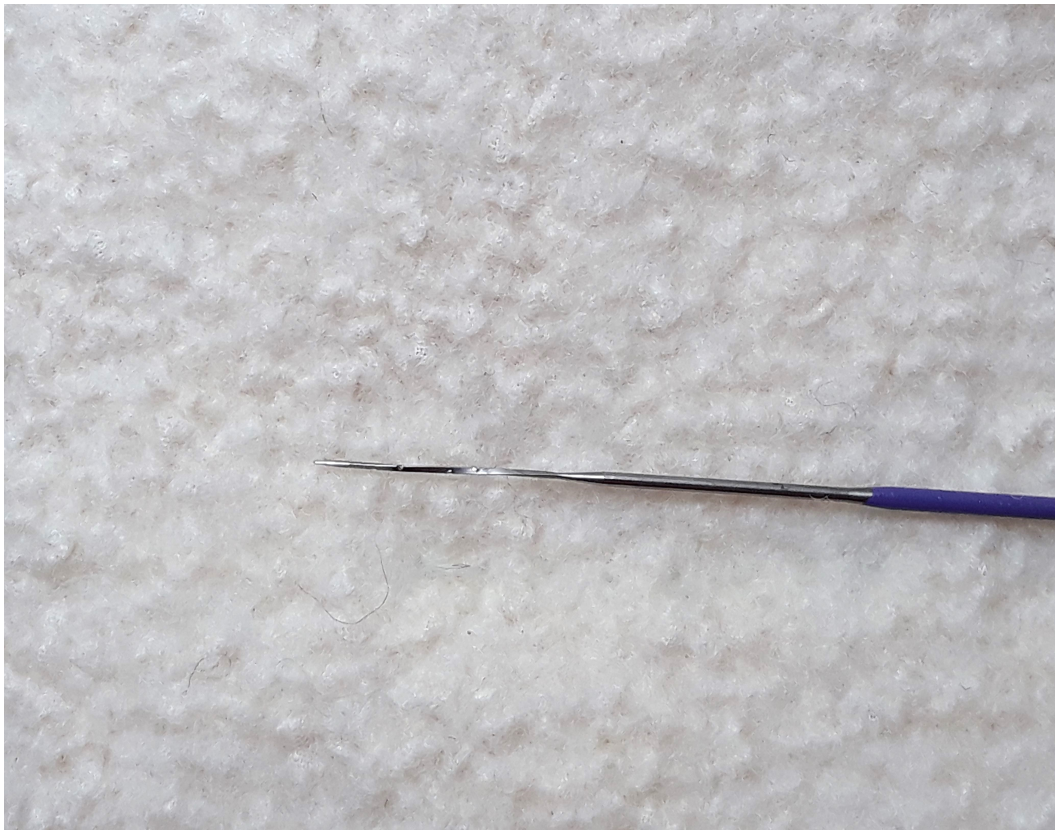
We can fix these wholes with felting needle.
I use 40 spiral felting needle and a foam pad for this repair work.



Place the fabric on the foam pad right side up. With the felting needle gently gather a little wool around the hole and softly stab it into the fabric hole.



Continue until you fixed all the needle holes.



All the holes are fixed.



The repair is still visible, but steam ironing with gentle pressure can fix that.



I like to use a wet cloth between the iron and the fabric when I do steam iron my wool fabrics.



The needle holes are fixed, they are invisible.

© by Marianna Halassy
www.mariannahalassy.com